

CareEdge-ESG conducts Annual GPIL Rating Surveillance

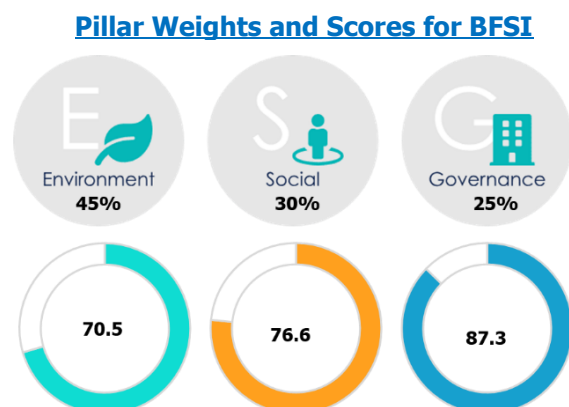
February 09, 2026

CARE ESG Ratings Limited (CareEdge-ESG) completes Annual ESG Rating Surveillance for Godawari Power & Ispat Limited

CARE ESG Ratings Limited (CareEdge-ESG), a Securities & Exchange Board of India (SEBI)-registered ESG Rating Provider (ERP) and a wholly owned subsidiary of CARE Ratings Limited, has completed the annual surveillance ESG rating for Godawari Power & Ispat Limited (GPIL).

GPIL, an iron & steel manufacturer specialising in the production of sponge iron, billets, TMT bars, and ferro alloys, has been upgraded to CareEdge-ESG 1¹ with an improved ESG score of 76.6, from its previous rating of CareEdge-ESG 3¹ with a score of 51.0. The company's upgraded ESG rating reflects its leadership performance in managing ESG risks and opportunities through best-in-class disclosures, comprehensive board-approved policies, and consistent implementation across operations. Please follow the [link](#) for GPIL's detailed ESG rating rationale.

The rating assigned to GPIL reflects its strong commitment to sustainable practices in the iron & steel industry. GPIL has demonstrated leadership across key environmental areas, including biodiversity, emissions control, and energy efficiency, while also showcasing exemplary performance in employee health & safety, human capital development, and community support under the social pillar. Further, the company's ESG materiality assessment, priority-wise matrix, and comprehensive enterprise risk management framework strengthen its governance profile, collectively supporting the assigned rating.



Rating Scale



For CareEdge ESG Rating scale and definitions, refer to www.careedgeesg.com

CareEdge-ESG's ratings are determined through a comprehensive analysis of the environmental, social, and governance risks and opportunities associated with a company. A composite score is calculated based on the company's performance across key indicators spanning the three pillars of ESG. For the iron & steel sector, CareEdge ESG's methodology comprises around 400 indicators across 20 themes. The environment pillar carries the highest weight, at 45%, as it covers critical issues such as emissions and energy, biodiversity, effluent treatment, and water management, which are central to mitigating the environmental impact of production.

ESG performance is dynamic and can change significantly due to policy enhancements, operational improvements, emerging risks, regulatory developments, or shifts in stakeholder expectations. Conducting annual ESG rating surveillance ensures that the company's ESG performance remains current, credible, and aligned with evolving standards. It captures year-on-year improvements in disclosures, risk management and sustainability practices, while highlighting areas that need strengthening. This process enhances transparency for stakeholders and helps companies to identify areas for improvement, motivating them to design sustainable transitions and fostering responsible business practices.

KVSKN Raveendra, Chief Operating Officer, Godawari Power & Ispat Limited, commented, " We are pleased to share that Godawari Power and Ispat Limited (GPIL) has been awarded CareEdge ESG-1 by Care ESG Ratings Limited, with an ESG score of 76.6, reflecting our strong commitment to sustainable growth, responsible governance, and ethical business practices. This recognition highlights our focused efforts on environmental stewardship, operational efficiency, and meaningful stakeholder engagement. Sustainability remains central to our long-term strategy as we continue to create lasting value for all stakeholders while supporting India's transition to a more sustainable future."

Saikat Roy, CEO – CARE ESG Ratings, commented, "CareEdge ESG's annual surveillance assessment provides an independent view of how companies are strengthening their ESG performance over time. GPIL's improved rating reflects meaningful progress in translating commitments into on-ground action, backed by clearer policies, focused initiatives, and stronger measurement of sector-relevant metrics. As ESG performance becomes increasingly linked to industrial resilience, stakeholder trust, and even access to capital—with stronger ESG profiles often helping companies secure more competitive funding—our assessments offer transparent insights to track this progress. CareEdge ESG remains committed to delivering reliable evaluations that drive measurable and lasting impact."

Nikunj Dube, CRO – CARE ESG Ratings, commented, "With the completion of the annual ESG rating review for GPIL, CareEdge-ESG reaffirms its commitment to advancing sustainable practices in the iron and steel sector through rigorous, transparent, and impartial ESG assessments that facilitate effective and accountable progress tracking for stakeholders. The surveillance exercise offers a data-backed evaluation of GPIL's performance, highlighting tangible improvements across key environmental and social parameters. These include increased renewable energy use, strengthened biodiversity initiatives, integration of ESG considerations into risk assessment processes, and a stronger focus on human capital management and workforce health & safety. Compared to the previous year, these developments reflect a notable strengthening of GPIL's overall ESG initiatives. The upgraded ESG rating, therefore, serves as a credible benchmark against industry peers and supports the continued enhancement of GPIL's long-term ESG strategy."

About CARE ESG Ratings Limited

CareEdge-ESG is a category I ERP, registered with SEBI and a wholly owned subsidiary of CARE Ratings Limited. With over thirty years of experience as an Indian credit rating agency, CARE Ratings' move to expand into ESG ratings through its subsidiary would help to enhance investor confidence while promoting accountability and transparency in businesses. Through our comprehensive and nuanced ESG assessments, CareEdge-ESG enables stakeholders to make informed decisions regarding sustainability, thereby fostering positive transformation and enhancing stakeholder trust.

For more information, visit www.careedgeesg.com | click on  to browse CareEdge-ESG's LinkedIn profile

Analytical Contact

Nikunj Dube	Chief Ratings Officer	Nikunj.dube@careedge.in	+91 – 72191 09995
Satabdi Mohapatra	Assistant Director	Satabdi.Mohapatra@careedge.in	+91 – 22 – 6837 4400
Sohini Majumdar	Analyst	Sohini.majumdar@careedge.in	+91 – 22 – 6837 4400

Media Contact

Mradul Mishra	Director	Mradul.mishra@careedge.in	+91 – 22 – 6754 3596
---------------	----------	---------------------------	----------------------

Relationship Contact

Saikat Roy	Chief Executive Officer	Saikat.roy@careedge.in	+91 – 84528 15872
------------	-------------------------	------------------------	-------------------

CARE ESG Ratings Limited

Corporate Office: A Wing – 1102 / 1103, Kanakia Wall Street, Andheri Kurla Road, Chakala, Andheri (East), Mumbai – 400 093
Phone: +91 - 22 - 6837 4400 | CIN: U66190MH2016PLC285575

About Us:

CareEdge is a knowledge based analytical group that aims to provide superior insights based on technology, data analytics and detailed research. CARE ESG Ratings Limited (CareEdge-ESG) is one of the India's pioneer ESG rating provider fostering sustainability with ESG insights. With an aim of being a catalyst of change for a sustainable future with the most credible ESG assessments, CareEdge-ESG provides a 360-degree appraisal for the ESG performance benchmarking cum transition enabling ESG risk mitigation and enhanced decision-making capabilities for all stakeholders.

Disclaimer:

The ratings issued by CARE ESG Ratings Ltd (CareEdge-ESG) are opinions about an issuer, regarding its ESG profile and relative position in managing ESG Risk through disclosures, policies and performance and are not recommendations or suggestion, directly or indirectly to any user, to buy, sell, make or hold any investment, loan or security or to undertake any investment strategy with respect to any investment, loan or security or any issuer. These ratings do not convey suitability of an investment or adequacy of market price for the investor. They shall not form the basis for any investment decisions or analysis and shall not be substitute for the skill, judgement and caution to be exercised by the user of such ratings while making business and investment decisions. CareEdge- ESG gives no representations or warranties regarding the use of these ESG Scores and related materials and/or their fitness for a particular purpose. The agency does not constitute an audit on the rated entity. CareEdge-ESG has based its ESG ratings/score based on information obtained from reliable and credible sources. CARE-ESG does not, however, guarantee the accuracy, adequacy, or completeness of any information and is not responsible for any errors or omissions and the results obtained from the use of such information. CARE ESG reserves the right to change the ESG ratings/ score from time to time in accordance with the methodologies, policies and procedures. CareEdge ESG rating/ scoring report and any related material are meant for informational and reference purpose only and shall not be modified, reverse engineered, reproduced, or distributed, in whole or in part, for commercial purpose, in any form or by any means, or stored in a database or retrieval system. No part of the ESG rating/ score report or any other related material shall be quoted or used without CareEdge ESG's prior written consent, as an input or constituent for deriving results, outputs, inferences which have not been independently verified or validated by CareEdge, for commercial purpose or otherwise. The ESG scores / ratings have been issued by CareEdge ESG for use by users in the jurisdiction of India in accordance with the applicable regulations. Any usage of the ESG rating by the entity rated shall be for internal reference purpose, reference of investors or for usage on the webpage of the rated entity and / or in the annual report or similar usage, however in each case with appropriate source credit to CareEdge ESG. Most entities who are rated by CareEdge-ESG have paid a fee, based on the complexity of rating assignment. CareEdge-ESG or its subsidiaries/associates/promoter may also be involved with other commercial transactions with the entity. CareEdge-ESG is not responsible for any errors and states that it has no financial liability whatsoever to the users of the ratings of CareEdge-ESG.